



BRISTOL
COMMUNITY COLLEGE

2023 PRESIDENT'S REPORT

Credits

Editor-in-Chief

Joyce Faria Brennan

Editor

Andrea Fortier

Contributing Editors

JoAnne Breault '84 '12

Kevin Spirlet

Judith Urquhart

Thomas Vieira '21

Linda Viveiros

Publication Design

Heather Tomaz

Cover Art

Kaylee Affonso '23

Photography

JoAnne Breault '84 '12

Edward Caruso

Faunce Photography

James Jones

Kevin Spirlet

Special Thanks

Dawn Banville

Stacie Charbonneau Hess

Denny Cosmo

Lisa Parsons

Kendall Paul '12

Lucinda Poudrier-Aaronson

Olivia Robinson '15

Keith Thibault

Mark Zajac '87

Bristol Community College ©2024

774.357.2811

777 Elsbree Street

Fall River, MA 02720

11 Field Road

Attleboro, MA 02703

800 Purchase Street

New Bedford, MA 02740

2 Hamilton Street

Taunton, MA 02780

Mail List, OPT-OUT

Please contact the
Bristol Community
College Foundation
at 774.357.2007

Table of Contents

- 1 A Message from President Laura L. Douglas, Ph.D.
- 2 MassReconnect
- 4 The Student Voice
- 5 A Place to Thrive
- 6 Endowed Scholarships
- 8 Land Acknowledgment
- 9 Engin Atasay, Ph.D.
- 10 Pakistan Exchange
- 12 Joseph A. Marshall Veterans Center
- 14 Kelli Hiller, Ed.D.
- 15 Free Dental Clinic
- 15 MAICEI Empowers
- 16 National Offshore Wind Institute
- 18 Elizabeth Nowakowski, J.D.
- 18 News and Awards
- 20 Community Partnerships
- 22 Donor Honor Roll
- 28 Financial Report
- 29 Leadership

Digital Extras

 BristolCC.edu/PresidentsReport



or scan here with your mobile device.



A Message from President Laura L. Douglas, Ph.D.

Bristol Community College is deeply woven into the tapestry of our community.

It has been an exciting year at Bristol Community College filled with great achievements and vibrant endeavors. I am thrilled to share the incredible progress we have made, all centered around the pillars of our Strategic Plan. At the heart of our work lies a commitment to student success, innovation and community. Our upcoming New England Commission of Higher Education (NECHE) accreditation stands as a testament to our dedication to academic excellence and continuous improvement.

One standout milestone this past year has been the establishment of the National Offshore Wind Institute (NOWI). This pioneering venture meets the ever-changing needs of the region's top emerging industry, promoting economic growth and positioning our college at the forefront of innovation.

Our commitment to accessibility and inclusivity is unwavering. We have seen a surge in enrollment, a testament to our efforts to make higher education accessible and a result of the launch of MassReconnect. Providing free community college for individuals 25 and older is a game-changer for Bristol County, creating a college-going culture and empowering our students to reach higher.

Bristol Community College is deeply woven into the tapestry of our community. From unique partnerships with local restaurants showcased in the "Bristol Community Cooking" show to providing free dental services through our on-site Dental Hygiene Clinic, our impact extends far beyond our classrooms. Our alumni's success stories in different regional sectors reflect our positive influence on the communities we serve.

Our global outreach initiatives, including welcoming international students and supporting our veterans, exemplify our dedication to diversity and inclusivity. Initiatives like the Wolfson Speaker Series serve as platforms for fostering intellectual discourse, dialogue and community engagement.



Bristol's partnerships, organizational excellence, unique innovations and focus on student success purposefully intertwine to shape the future of our college. As I prepare to retire in January 2025 and entrust our college to a new leader, I am confident that the college will continue to flourish. Bristol will always be the tapestry that binds our community together.

Thank you for caring about our students and recognizing the value of our community college. Without your support, our great work would not be possible. We look forward to continued collaboration and a successful new year!

Laura L. Douglas

Laura L. Douglas, Ph.D.



Breaking Barriers and Building Futures: Massachusetts Paves the Way for Adult Learners' College Dreams

Bristol Community College continues to see an increase in enrollment since implementing MassReconnect. This past fall, Massachusetts Governor Maura T. Healey's 2024 budget supported a new student financial assistance program that puts college within reach for individuals aged 25 and older. MassReconnect is a groundbreaking initiative that creates opportunities for those who may never have imagined higher education was in their future or for someone who needed to revitalize a dream put on hold.

"Bristol students come from diverse backgrounds, each with unique aspirations and varying levels of educational attainment. Regardless of their starting point, Bristol has the support services and resources to assist and guide students. Now, the MassReconnect program helps to alleviate the financial burden, so they can graduate without debt," said Laura L. Douglas, Ph.D., President, Bristol Community College.

As soon as MassReconnect was announced the college was able to begin enrolling students. The admissions application had recently been revised and streamlined so that it now only takes an average of five minutes to complete. On the back end, admissions staff can review applications and admit students in about 48 hours due to the automation that was made possible through the introduction of new technology.

"We recognize that coming to college as an adult is a much different experience compared to entering directly out of high school. The college has put into place tailored communications and support services that provide students with a more personalized experience. We can reach out with automated reminders to keep our students on track, share information about college resources and stay in touch with counselors," explained Kate O'Hara, Vice President of Student Services and Enrollment Management. "This enhanced support throughout the admissions process facilitates a smoother transition into the college."

Support

Adult learners are often surprised to see students of similar age when attending classes at Bristol Community College. Balancing life's responsibilities in addition to catching up on technology are a few challenges that adult learners returning to college regularly face. The college has library resources, tutoring and academic support, disability support services and technical support available to all students. For members of multicultural communities, the college offers resources, peer support and direction. The college's Joseph A. Marshall Veterans Center has been recognized nationally and is one example of the comprehensive services offered to our students.

Enrollment

The 2022 U.S. Census reported that 15% of people aged 25 and older in Bristol County have some college or no degree, while only 32% have a high school diploma or equivalent. Thirty-seven percent of Bristol's MassReconnect students have previously attended college but have not obtained a degree. In Fall 2023 the college saw an increase of 565 students who received MassReconnect funding totaling \$954,503 in financial aid. This surge correlated with a 200% rise in adult learner applications for Fall 2023, after the MassReconnect launch. Many of these students enrolled and secured additional federal and state aid, citing MassReconnect as a key factor in their decision to go to college. Overall admissions applications rose by 14.9%, comprising a 10.9% increase from new students, a 26.2% surge from returning students, and an impressive 40% spike in high school applications from the 2023 graduating class. The overall enrollment from Fall 2022 to Fall 2023 increased by 4.5%, with a 3.6% rise in BIPOC students and a 5% increase in the overall percentages of adult learners.

For the Spring 2024 semester, Bristol has seen an increase in enrollment of 760 students participating in



Bristol's latest television commercial showcases adult learners and highlights the motivations behind their commitment to "Making it Happen" with Bristol.

MassReconnect, with a state allocation exceeding \$1.3 million in financial aid. Bristol continues to have a positive trajectory. Full-time student enrollment increased 7.4%. Part-time student enrollment has seen a 1.4% increase. The rise in BIPOC enrollment by 2.6 percentage points illustrates the success of Bristol's ongoing efforts towards fostering inclusivity and diversity within its community. Additionally, the adult learner population has seen a notable surge, with an increase of 8.1%. These trends underscore Bristol's commitment to providing accessible and inclusive higher education experiences for its students.

Affordability

"A college degree does not have to come with a great deal of debt. In fact, 64% of our new incoming students graduate with zero debt," said Alaina Marcotte, Director of Financial Aid. "Bristol's low tuition costs combined with scholarships and other cost-saving options can result in an affordable education. The first, and most important, step is to fill out the FAFSA." The FAFSA (Free Application for Federal Student Aid) opens doors to a number of different cost savings options that many times are applied without any further action. Massachusetts also has the Tuition Equity Law which passed last summer and provides in-state tuition rates and equal access to state financial assistance to students regardless of their immigration status via the newly introduced Massachusetts Application for State Financial Aid also known as MASFA."

Bristol student Faith Amaral is seeing the benefit. Juggling a family and maintaining a demanding role as a police officer for 17 years, she never envisioned returning to school. "This opportunity represents more than financial support—it symbolizes belief in your potential and dedication to your future," she said, highlighting that MassReconnect served as the catalyst for her college comeback and provided the motivation to earn a degree in criminal justice.

Fall 2023

565

Total students awarded

\$954,503

Total amount awarded

\$1,689

Average student award

Who is eligible?

You may be eligible for MassReconnect, if you:

- Are 25 or older on the first day of classes
- Have not previously received an associate or bachelor's degree or the equivalent
- Are enrolled in at least 6 credits toward an associate degree or eligible certificate program
- Complete the Free Application for Federal Student Aid (FAFSA)
- Have been a permanent legal resident of the Commonwealth for at least one year at start of the enrolled term
- Maintain satisfactory academic progress according to the college's requirements



THE STUDENT VOICE

Bristol Alumna Leads Creation of New Hispanic Chamber



Von Marie Moniz | Photo by Allison Faunce of Faunce Photography

The experience of students at Bristol Community College consistently reflects a profound sense of belonging upon their arrival at any of our college locations. This welcoming atmosphere is attributed to the dedicated faculty and staff, as well as the diverse student body. Such was the sentiment of Von Marie Moniz when she began her educational journey at Bristol.

“As soon as I came to Bristol, I felt welcomed,” she recalls, highlighting the connections she made with fellow students and supportive faculty.

Bristol Community College served as the catalyst for her self-discovery, instilling the confidence she needed to pursue her career goals. A first-generation Dominican American, she ventured beyond the South Coast region to obtain her bachelor’s degree and pursue a career in communications. Upon her return in 2018, she was impressed by the

remarkable transformation unfolding in her hometown. Her involvement with Entrepreneurship for All (EforAll) ignited her entrepreneurial spirit and fostered connections with like-minded individuals.

Drawing upon her passion and vision, she founded Latinas in the South Coast, a Massachusetts-based organization dedicated to providing a platform for Latina professionals, entrepreneurs and Hispanic-led organizations.

Now, Von Marie is spearheading the launch of the South Coast Hispanic Chamber of Commerce, the first chamber in the region specifically designed for Hispanic-owned businesses. This endeavor was achieved through a strategic partnership with founders Guelmie Santiago, Damaris Ferrer, Thais Gutierrez and Jacqueline Correia as well as business and event manager Bibiana De Jesús Pacheco.

“Our vision is to become the foremost Hispanic organization dedicated to elevating excellence and amplifying opportunities for economic growth in southeastern Massachusetts,” Von Marie said.

The South Coast Hispanic Chamber of Commerce began offering programming in January 2024, with an official launch planned for the summer of the same year.

Von Marie’s commitment to community service and entrepreneurship shines through this remarkable initiative.



A Place to Thrive



Bristol's students come from all walks of life, but together, they all encounter a place to learn, thrive and grow. Don't just take our word for it. Hear from some of our students who have found success through a range of opportunities at Bristol.

Libbey Mitchell

Libbey Mitchell, Development Manager on the Massachusetts Community Events team at the American Cancer Society, credits her success to the cost savings of MassTransfer and the strong foundation she received from Bristol.

Raphael Lopes

After a traumatic football injury, Raphael Lopes turned his recovery experience into a journey to become an occupational therapy assistant, proudly marking Bristol's 500th Occupational Therapy Assistant graduate.

Hailey Charles

Hailey Charles turned her civic engagement internship at Freight Farms into more than just a chance to gain valuable work experience; it became an opportunity to cultivate fresh food for the community.

Selma Delaconcepcion

As a first-generation college student and immigrant from Brazil, Selma Delaconcepcion is leveraging her education and career development to pave the way for herself and her three children.

Myesha Auguste

Myesha Auguste discovered her career path during her criminal justice internship with Mass 911, where she promotes public safety initiatives.

Make a Lasting Impact with Endowed Scholarships

An endowed scholarship is a scholarship that is created with a large initial donation. The donation is then placed in an investment account where, thanks to interest, dividends and changes in market value, it grows over time. That investment growth is what provides students with scholarship funding for tuition, fees, books and supplies for many years into the future. For example, a scholarship fund that was created 20 years ago at Bristol Community College with a gift of \$15,000 has provided more than \$27,000 in scholarships to more than two dozen students and is currently valued at more than \$48,000.

Now, thanks to the Higher Education Endowment Incentive program offered by the Massachusetts Board of Higher Education (BOHE), all donations to either a pre-existing endowed scholarship or a newly created one will be matched at a rate of 50%. Therefore, a donation of \$500 becomes \$750; \$1,000 becomes \$1,500; \$5,000 becomes \$7,500; and so on.

The minimum investment amount to start your own endowed scholarship is \$15,000 but, thanks to the BOHE match, a gift of \$10,000 becomes \$15,000 with the match incentive.

If you are interested in starting your own endowed scholarship, contact the Bristol Community College Foundation at BCCFoundation@BristolCC.edu or 774.357.2007.

Endowed Scholarships

Fred and Ella Crane Family Scholarship

Created in memory of Frederick and Ella Crane, this scholarship pays homage to the academic support of their children and grandchildren, many of whom attended Bristol. It advances their legacy by encouraging scholarship recipients to pursue and achieve their American dream, just as they did. This scholarship supports matriculated Bristol students in the sciences, engineering, mathematics or education programs with a 3.0 or higher GPA and financial need. Consideration also goes to Massachusetts residents with special academic needs.

José Francisco Costa Endowed Scholarship

This endowed scholarship was established in 2023 to honor the work and vision of José Francisco Costa and to commemorate the 20th Anniversary of the LusoCentro, the academic center at Bristol that, working across academic disciplines, promotes the study of the language and culture of the Portuguese-speaking community. This scholarship was presented to José Costa during the 20th Anniversary LusoCentro Event and provides financial support to students who are pursuing a degree at Bristol studying the Portuguese language.

Delta Dental Scholarship in Honor of Dennis Leonard

Delta Dental of Massachusetts established the Dennis Leonard Scholarship at Bristol to enhance diversity among dental hygienists. Named by his successor Erik Montlauk, this endowed scholarship supports students of color pursuing dental hygienist careers through tuition assistance. According to Mr. Montlauk, “There’s a lot of work to be done in this space, but we think this is an important first step in addressing the workforce shortages ... and the gap between the amount of care that is needed and the people that are there to serve and deliver that care. There’s also the chance to increase the diversity of candidates going to school. As a leader in this industry, it’s important for Delta Dental to try to be part of the solution.” This scholarship provides financial support to students pursuing a degree at Bristol in dental hygiene. Preference shall be given to BIPOC (Black, Indigenous and People of Color) students.

"I used to work two part-time jobs to pay for my tuition. But thanks to the scholarship, I was able to take more time to focus on school and actually build my future." – Ridge Mathieu

Joseph and Joan Andrade Memorial Scholarship

This endowed scholarship was established in loving memory of Mr. and Mrs. Andrade of Taunton by their eight children. Joan Andrade lived in service to others as a CNA and a Residential Counselor for the developmentally delayed, until her retirement in 2018. Joseph Andrade, a jack-of-all-trades, supported his family in various ways throughout his life. In addition to raising their own children, Joseph and Joan opened their home as foster parents to innumerable children. This scholarship benefits students and provides financial support to any student pursuing a degree at Bristol in nursing.

Paula Parsons Endowed Scholarship

Established in honor of Paula Parsons '75, this endowed scholarship was created by Ms. Parsons to recognize the importance of Bristol in supporting her career pathway. This scholarship provides financial support to students pursuing a degree at Bristol who show financial need

Andre J. Godwin Memorial Scholarship

Established by the Fall River Chapter of the National Association of the Mentally Ill, this endowed scholarship was established in memory of Andre J. Godwin who passed away in June 2023. A student at Bristol, Andre was a very gifted young man whose full potential was thwarted by the challenges of mental health that life brings before us. Throughout his life, Andre fought bravely to overcome the many obstacles he faced. His family supported his efforts to heal and admired the persistence he demonstrated along the way. This scholarship provides financial support to students at Bristol pursuing High School Equivalency credentials then transitioning to a credit-bearing certificate or degree program.

Shelly A. Costa Memorial Scholarship

This endowed scholarship was created in loving memory of Shelly Costa who was a graduate and longtime employee of Bristol Community College, serving in the President's Office. Shelly will always be known for her welcoming smile. She will be remembered best as a wonderful wife and caring mother with a vivacious free spirit and a love for spending time with family on the beach. This scholarship provides financial support to adult learners pursuing a degree at Bristol.

Dr. Eleanor Morad Nursing, Ed.D. Scholarship

Established by Dr. Eleanor Morad, a longtime Professor of Nursing at Bristol, to specifically support a strong continuing pipeline of nurses in the local Bristol County community.

This scholarship aids second-year Bristol nursing students with a 3.0 GPA or higher, prioritizing single mothers. The selection is made by the Bristol Nursing department, with annual awards presented at the Nurse Pinning Ceremony by Dr. Eleanor Morad or designated faculty.

Scholarships may be applied to tuition, fees, books, supplies and emergency financial assistance for continuous studies.

251
Student scholarships awarded
from the Bristol Foundation

\$309,000
Total scholarship funds awarded
from the Bristol Foundation

"I started [Bristol] in my third trimester because I really wanted to make an impact in my daughter's life as she got older ... It's an accomplishment to say that I'm now about to get my degree." – Samantha McCrohan

Nurturing Futures: The Transformative Impact of Bristol's CARE Fund

The CARE Fund serves as a critical lifeline for Bristol Community College students facing specific hardships that could impede their educational journey. This support is made possible through the generosity of donors, as the fund relies on contributions from both individuals and organizations.

The financial assistance offered by the CARE Fund is instrumental in addressing a range of immediate needs that may hinder a student's academic progress. This includes support for transportation (such as bus passes, gas cards and minor car repairs); short-term housing aid (covering rent, utility bills and other household expenses); essential educational materials (such as textbooks); and one-time partial tuition payments. The CARE Fund is not a substitute for federal and state financial aid, and students are encouraged to explore all other available avenues of support before seeking assistance from the CARE Fund.

As Bristol works to address the challenges of educational access, the CARE Fund serves as a beacon of hope, offering assistance to those in need. To contribute and make a difference in a student's life, consider a donation to Bristol's CARE Fund.

 BristolCC.edu/CareFund



Living Bristol's Land Acknowledgment

A Land Acknowledgment helps raise awareness about the history of the United States and the resilience of today's Indigenous communities. Bristol's Land Acknowledgment, guided by the Equity and Inclusion Council, was created in consultation with historians, Bristol Honors students and the Wampanoag community. The Acknowledgment serves as an invitation to students, employees and the community to think more critically and behave more responsibly—towards the environment and each other—recognizing that today's decisions impact future generations.

This past fall, the council—in collaboration with Bristol's Holocaust and Genocide Center—hosted Wampanoag educator Linda Coombs and social-issue documentarian Adam Mazo in a screening of the Emmy® Award-winning documentary of “Dawnland.” “Dawnland” shows how genocidal policies contribute to intergenerational trauma—threatening cultural survival. Decolonization work begins by listening and coming together. The council is proud to highlight stories that promote peace in turbulent times.

LAND ACKNOWLEDGMENT

Bristol Community College acknowledges that the locations on which we teach, learn and connect are situated on the ancestral territory of the Wampanoag Tribal Nation who has lived here for millennia – protecting and stewarding the land and waterways – well before the arrival of colonial settlers over 400 years ago. We support your efforts to learn more about the Wampanoag people and all our Indigenous neighbors. As an engaged institution of higher education, we commit to hiring practices, programs and culturally accurate curricula that uplift Indigenous cultures and voices in our communities.

 BristolCC.edu/LandAcknowledgment



Empowering Tomorrow's Educators



Engin Atasay, Ph.D.

When Engin Atasay, Ph.D., first came to Bristol Community College in 2014, he was given the task of revamping the Elementary and Secondary Education department with the goal of preparing graduates to work as transformative educators who foster positive change in their communities. Today, the program has evolved to meet the needs of the modern classroom and is driven by empowerment, inclusion and cultural competence, the pillars of critical pedagogy.

A native of Turkey, Atasay arrived in the U.S. as a political science graduate student, later transitioning into a Ph.D. program in education, culture and society at the University of Utah, earning his degree in 2014. His international perspective, coupled with a rich educational background, uniquely positions him to engage in conversations about equity, diversity and inclusion.

Reflecting on the program's evolution, Atasay describes it as his "baby". From its origins as a liberal arts program with a single education course, EDU 220, the program now serves as a springboard for aspiring educators targeting kindergarten

through grade 6 (K-6) and middle/high school. With a focus on empowering students, the program offers a pathway to transfer to a four-year college or university, allowing students to qualify as paraprofessionals after earning 48 credits.

In his role as an Associate Professor and Department Chair of Elementary and Secondary Education, Atasay emphasizes the program's commitment to social justice and transformative change. Core courses are meticulously designed to equip students with the necessary knowledge to thrive in diverse classrooms, fostering critical thinking, compassion and awareness of their influence in the educational landscape.

Atasay's connections in higher education facilitate a seamless transition for students to pursue bachelor's degrees, with partnership pathways like those with Bridgewater State University and Lesley University. The program also offers transfer opportunities within the Plus Program, particularly for students in the general studies/education studies program, a development in which Atasay actively participated.

Furthermore, Atasay's initiatives, such as the JET (Journey into Education and Teaching) program and the Bristol chapter of SEAM (Student Educators Association of Massachusetts), provide students with avenues for professional growth, networking and financial assistance in pursuing teaching licenses. The organization is affiliated with the MTA (Massachusetts Teachers Association).

Atasay has advice for his students. "If you want to be an educator, you need to reflect on your engagement with your community as well as the world," he says.



Pakistan Exchange Promotes Diversity and Acceptance



Farah Habib

In 2021, Farah Habib, Associate Professor of English, began working on an anthology collection of literature written by Pakistani writers in English. She embarked on this journey to research her family's connection to the Partition Period, a turbulent time in history when India liberated itself from British colonial power and formed the country of Pakistan. She also cultivated global connections and promoted cultural awareness and diversity at Bristol Community College.

She connected with the American Institute of Pakistan Studies and wrote a grant that enabled her to travel to Pakistan for a 10-day trip, participating in professional development workshops with the goal of promoting the study of Pakistan as a country and culture. She had not been back to her homeland in more than two decades.

"I thought it was important to reconnect with my heritage after the passing of my parents," says Habib. "This project was an anchor that allowed me to explore my roots and make sense of those family stories that I can pass down."

She developed relationships with faculty there that inspired her to develop a cultural exchange program in 2023.

"I wrote a grant with Professor Paul Edleman from Sauk Valley Community College in Illinois that enabled us to put together a cultural exchange program called APEX (American Pakistan Educational Exchange)," she said.

Grant funding allowed them to invite seven students and three faculty members from Kinnaird College for Women in Fall 2023. Located in Lahore, Pakistan, and founded during the colonial period in 1913, the college is noted for producing several lauded authors.

The APEX program focuses on the mutual exchange of cultures between Pakistan and the United States. For the Pakistani students, the visit was their first to the U.S., and many of them had never traveled on an airplane before. While here, students and faculty participated in academic course workshops and collaborated on projects, which included an oral presentation on the topic of mental health and women. In addition to their time at Bristol, they traveled to Sauk Valley Community College and Harvard and Brown Universities. The group also joined Bristol's Fine Arts department on a bus trip to New York City, where they perused art museums at Museum Mile.

The experience engendered dialogue about diversity and acceptance. "It was a pleasure seeing how the students connected with each other just by spending time with Bristol students and eating lunch," says Habib. "The project was the epitome of cultural diversity because it exposed both groups of students to cultural immersion, and it was a unique opportunity to meet people from a foreign country where their paths would never have crossed."



There were many positive outcomes from the program. Students from the Fine Arts department are still in contact with the students from Pakistan and have met virtually since the event. Since then, a group of faculty and the dean of Arts and Humanities from Bristol traveled to Pakistan in February 2024.

The inception of the project aligns with Bristol's mission of academic innovation and equity. "It was an incredible accomplishment because the program fostered positive communication and critical thinking by challenging people's stereotypes," said Habib.

"When you can demystify a country such as Pakistan, which is sometimes ostracized because of its history, you can promote understanding and foster a realization that as humans, we have more similarities than differences."



Bristol's Theatre Program Heads to Scotland

Bristol's esteemed theatre program will devise and perform an original piece of theatre at the **2024 Edinburgh Festival Fringe**, the world's largest performing arts festival.

Under the guidance of Bristol's Artistic Director David Ledoux and with support from Korey Pimental, founder of The Glass Horse Project Theatre and a Bristol Alumnus, theatre students are crafting an original theatrical production throughout the Fall 2023 and Spring 2024 semesters. The production will culminate in a captivating performance in Edinburgh, Scotland, for an international audience in August. The International Collegiate Theatre Festival will also lend coordination and support to this ambitious venture.

Fundraising events for this once-in-a-life-time learning experience are underway. Visit the website to donate.

YOU ARE NOT AN ISLAND

MAY 30+31
7 P.M.

DIRECTED BY DAVID LEDOUX AND
CREATED BY THE BRISTOL
THEATRE PROGRAM ENSEMBLE

BRISTOL
COMMUNITY COLLEGE

B BristolCC.edu/Theatre



Joseph A. Marshall Veterans Center: A Beacon of Support and Excellence for Student Veterans

The Joseph A. Marshall Veterans Center is a place where student veterans can come together to find services, camaraderie and unwavering support. Located on the Fall River Campus with connections to all of the Bristol locations and online, the Veterans Center is led by Denny Cosmo, who serves as the director and a mentor to the students who come through its doors. A true center of excellence, the Veterans Center has earned numerous accolades and recognition for its commitment to our student veterans. From prestigious awards to groundbreaking community outreach initiatives, these stories showcase the remarkable impact this center has had on both our campus and the broader community.



Denny Cosmo

Leading the Way

Denny Cosmo, Director of Bristol Community College's Joseph A Marshall Veterans Center, was recently named a 2023 Veterans Champion of the Year by G.I. Jobs®. Veterans Champions of the Year recipients are recognized for going above and beyond to help student veterans and their families succeed in education. In addition, Denny was named the 2023 and 2024 SVA Chapter Advisor of the Year by Student Veterans of America.

Denny is an energetic U.S. Army Veteran and veteran's affairs professional with a passion for guiding and empowering student veterans. Denny proudly served as a Ranger in both airborne infantry and military intelligence branches of the U.S. Army from 2001-2010, completing two combat tours in Iraq.



John Morris

Student Veteran Takes Top Role

John J. Morris, a veteran of the United States Air Force, served as the Student Trustee for Fall 2023.

John is continuing his education at UMass Boston, where he intends to pursue both a bachelor's and master's degree in information technology. His ultimate goal is to establish a career in information technology management or information security within the defense or government sector.

John was also recently honored as one of 32 national recipients of G.I. Jobs® 2023 Student Veteran Leadership Award. The annual awards honor the achievements of outstanding student veterans and the many ways they serve their schools, communities and fellow veterans.

Bristol's Student Trustee is elected annually by their peers to serve as a student representative and member of the Bristol Community College Board of Trustees. Bristol's Board of Trustees is made up of regional business and community leaders who work tirelessly to ensure the college's institutional initiatives remain at the highest level of quality.



Military Friendly

Bristol Community College is proud to be awarded the gold designation as a military friendly school in the 2023-2024 Military Friendly® School's list.

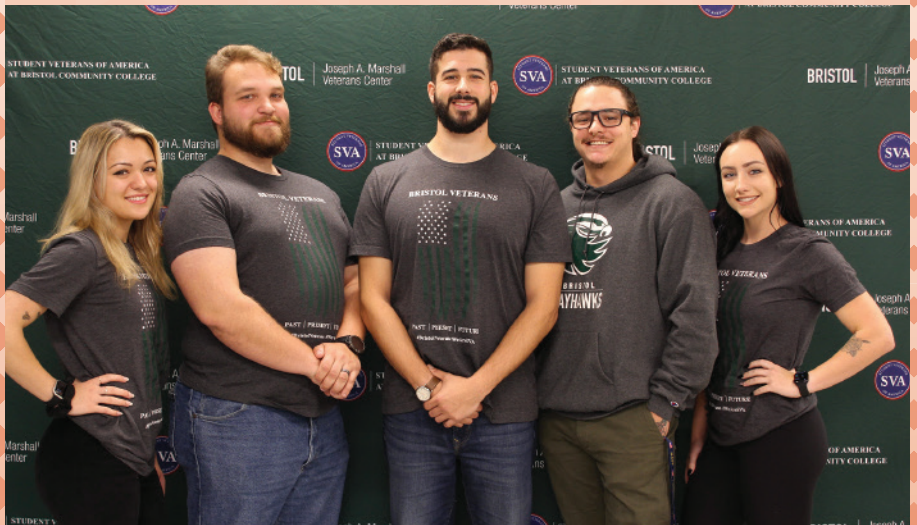
The 2023-2024 Military Friendly® Schools list, by Vqictory, a media entity for military personnel transitioning into civilian life, honors schools throughout the country that are doing the most to embrace America's military service members, veterans and spouses as students, ensuring their success on campus.



Warrior-Scholar Project First for a Mass. Community College

Bristol's Veterans Center hosted the Warrior-Scholar Project (WSP) in October 2023. The full-day immersive experience welcomed intellectually curious veterans and National Guard members to the college's Fall River Campus for an engaging College Success Workshop.

WSP's College Success Workshops provide student veterans with the skills they need to succeed in higher education and include study skills and college transition sessions. WSP offers one and two-week humanities-based courses at premier institutions of higher learning, such as Harvard, Princeton and Yale. This is Bristol's first time hosting the WSP, as well as the first time that the initiative has been hosted at a Massachusetts community college.



SVA Future Leaders Visit DC

The college proudly sent six outstanding Bristol Veterans to the esteemed Student Veterans of America 2023 Leadership Institute in Washington, DC. The college's inaugural cohort of six, out of the 78 students selected nation-wide, was the largest of any institute of higher education to attend the Leadership Institute. The cohort's participation in the event marked a significant milestone for Bristol Student Veterans.

Dr. Hiller Puts Science into Action



Dr. Kelli Hiller

Kelli Hiller, Ed.D., speaks to a group of girls who are wide-eyed and brimming with questions about science. Through her active involvement with the STEM Starter Academy and the American Association of University Women, Hiller, along with her dedicated team, orchestrates STEM Days to inspire girls ages 10 through high school to pursue careers in science, technology, engineering and mathematics. “It is important to spark that interest at such a young age because they are our future,” says Hiller.

In her role as Professor and Director of Clinical Lab Sciences at Bristol, Hiller collaborated with Dean Robert Rezendes to introduce a phlebotomy program at the Taunton Center, extending its reach beyond the New Bedford and Fall River campuses. She designed the curriculum and free open educational resources which include YouTube videos she produced herself. Developed as a summer program in Taunton, 15 students have completed the certificate to date.

The program’s success is attributed to its ability to offer economic independence to students. The phlebotomy process, integral to diagnostic testing and therapeutic interventions for specific conditions, allows students to earn up to \$23 per hour with a phlebotomy certificate, according to Hiller. Although an entry-level job in the healthcare field, it serves as a springboard for students who aspire to further their careers and seek higher-paying jobs.

Bristol’s partnership with MassHire further enhances opportunities by placing unemployed individuals in program slots, paving the way for a career in healthcare. Many Bristol students secure local employment at healthcare facilities like Quest Diagnostics, Southcoast Health and Steward Health Care.

 BristolCC.edu/Hiller



Free Dental Clinic has Community Smiling



Photo by Edward Caruso

If you have ever visited a local dentist, chances are your dental hygienist graduated from Bristol's top-notch program. A pride point for the college is its track record of preparing an average of 22 students per year to seamlessly transition into the workforce upon graduation. Their expertise comes from the hands-on experience provided at the college's free community Dental Hygiene Clinic.

The clinic not only contributes to the education of aspiring dental professionals but also benefits the community by offering a range of free services. These include dental exams, sealants, cleanings, x-rays, periodontal scalings, whitening, fluoride treatments, nutritional counseling, oral cancer screenings and blood pressure screenings.

Community members are encouraged to visit the Dental Hygiene Clinic for these valuable services and to assist students in acquiring essential skills for the job market.

The clinic, located on the Fall River Campus, welcomes all members of the community with a suggested donation of \$10. No insurance is required, and appointments can be made by calling 774.357.2139.

 BristolCC.edu/DentalClinic



Empowering Through Inclusion: Massachusetts Initiative Thrives at Bristol

The Massachusetts Inclusive Concurrent Enrollment Initiative (MAICEI), in partnership with local school districts, is transforming the educational landscape for public high school students ages 18 to 22 with intellectual disabilities and/or autism. Committed to full inclusion, MAICEI empowers students to enroll at Bristol Community College for personal development or pursue college courses for credit that are aligned with their interests and career aspirations.

Students, guided by dedicated education coaches, not only attend classes but also participate in campus life, clubs and internships, enhancing both academic and life skills. Since its inception in the Fall of 2019 with six students, the initiative has grown, supporting 13 students in the 2023/24 academic year from the Fall River, Old Rochester and Somerset Berkley school districts.

This opportunity not only provides a vital learning experience for students, who otherwise might not have the opportunity to attend college, but also contributes to the cultivation of a more inclusive and diverse college community. This commitment to empowering students on their educational journey ensures they receive the necessary tools and guidance to thrive in a college environment and beyond.

 BristolCC.edu/MAICEI



NOWI: Powering the Offshore Wind Workforce with Cutting-Edge Training

The National Offshore Wind Institute (NOWI) is a groundbreaking facility established by Bristol Community College to serve as a one-stop shop for health and safety and skill development training in the offshore wind industry and related sectors. Strategically situated along the working waterfront of New Bedford, the NOWI is a state-of-the-art facility equipped with cutting-edge technology and equipment designed to meet the growing workforce demands of the offshore wind sector. The NOWI will provide a comprehensive training portfolio, virtual reality programs, private space for related trainings and other services and offerings.

The NOWI works closely with industry and has built key strategic partnerships to ensure that the training programs meet the ever-changing needs of this emerging industry. By seamlessly integrating the physical facilities typical of the wind turbine environment with those onsite at the NOWI – along with simulators and virtual reality technology – participants receive training that mirrors the actual working conditions of careers in this sector. From vertical fall arrest systems to turbine-specific ladders, participants not only grasp theoretical aspects but also gain hands-on experience in using equipment safely and efficiently within emergency response scenarios.

The NOWI currently has Global Wind Organisation (GWO) certification for Basic Safety Training (BST), Advanced Rescue Training and Enhanced First Aid, and it will achieve certification for Basic Technical Training and Slinger Signaler training modules by Spring 2025

Strategic Partnerships for Comprehensive Training

The NOWI has forged a critical partnership with Maersk Training, a globally recognized training provider with more than 40 years of experience in the field. This collaboration provides the NOWI with experienced support for program development, program certification, asset and staffing management and certification, and other critical parts of a workforce training facility. The NOWI is supported by Maersk to offer GWO certifications and to expand to other training programs such as Helicopter Underwater Escape Training or HUET.



Height and Safety and Emergency Response Focus

The offshore wind industry requires a workforce that has health and safety training to minimize the risk of injury. The NOWI provides these skills through its GWO BST that encompasses the essential Working at Height and Fire Awareness modules. The NOWI trainers guide participants in learning to use personal fall protective equipment, lanyards and harnesses, and they acquire competencies necessary for safe work in at-sea offshore wind environments. Within the GWO Fire Awareness module, instructors teach participants how to assess emergency situations, use fire extinguishing equipment and successfully evacuate smoke-filled environments with proper safety protocols.

The NOWI's strategic planning blends its industry partnerships and input with Maersk Training guidance to stand at the forefront of offshore wind industry training. Dedicated to responding to the needs of the industry with high-quality training, the NOWI is at the forefront of preparing the U.S. workforce for the evolving opportunities presented by this nascent offshore wind energy sector.



Strategic Partnerships & Adaptable Training Programs

The NOWI is not just preparing for today but is actively shaping a safer and more resilient workforce for the years ahead.

For example, the evolving landscape of transportation to the offshore wind project requirements has transitioned from the usage of boats and crew transfer vessels to helicopters. This change has resulted in a new training requirement for the offshore wind workforce, Helicopter Underwater Escape Training (HUET), which is required for all individuals transported by helicopter.

The NOWI has reprioritized its strategic planning to develop and adopt HUET into its training portfolio. This portfolio expansion will require Maersk Training to support a comprehensive train-the-trainer program, curriculum, trainer certification and equipment.

The NOWI's foresight through its partnerships, as well as its close collaboration with industry, positions it as a leader in providing relevant and required training solutions for businesses and individuals navigating this new and changing sector.

Vineyard Wind Exhibit Anchors at New Bedford Campus

Bristol's New Bedford Campus is proudly hosting the groundbreaking Vineyard Wind education exhibit, offering the public a free exploration into the nation's inaugural utility-scale offshore wind project.

Vineyard Wind is actively constructing the country's premier utility-scale offshore wind energy initiative, strategically positioned 15 miles off the Massachusetts coastline. This revolutionary venture is poised to supply clean, sustainable, cost-effective energy to more than 400,000 residences and enterprises throughout the Commonwealth, while significantly reducing carbon emissions by a staggering 1.6 million tons annually.

Positioned at the forefront of the offshore wind sector's expansion on New Bedford's Waterfront, Bristol's NOWI is set to play a pivotal role in creating a regional workforce and supporting local infrastructure for the burgeoning offshore wind industry.

In addition to workforce training at the NOWI, the college offers an Associate in Science in engineering technology (offshore wind power) along with two certificate programs specializing in offshore wind power technician and offshore wind power technology.

Advancing Clean Energy in Massachusetts' Urban Centers

The NOWI has been honored by MassINC's Gateway Cities Innovation Institute for its outstanding contributions to advancing clean energy in Massachusetts' regional urban centers. Recognized as one of six cutting-edge initiatives making a significant impact, the NOWI stands out for its commitment to a sustainable energy future.

MassINC's mission is to make Massachusetts a place of civic vitality and inclusive economic opportunity while the Gateway Cities Innovation Institute works to unlock economic potential in small and midsize regional cities.

The NOWI's recognition affirms its importance in the larger narrative of regional urban development and economic revitalization, emphasizing collaborative efforts toward a greener and more prosperous Massachusetts.



NEWS AND AWARDS

Paralegal Studies Raises the Bar for All Students



Elizabeth Nowakowski, J.D.

Elizabeth Nowakowski, J.D., brings a global perspective and a commitment to social justice to Bristol Community College. Originally from communist Poland, her family journeyed through Germany before settling in the United States. Nowakowski, reflecting on her early years, emphasizes adaptability and language learning as crucial skills developed during that time.

Nowakowski's mother escaped Lithuania during WWII, and her father, a first-generation college graduate, left his Polish village to pursue education. Nowakowski herself, as an immigrant, identifies with students facing similar adversity.

"Being an immigrant helps me relate to my students," she says. "Some students are immigrants trying to assimilate and many are first-generation or adult learners juggling the responsibilities of raising a family."



Bristol Community College's Paralegal & Legal Studies program was granted approval from the American Bar Association (ABA).

Bristol's Paralegal Studies program, led by Nowakowski, ensures students are prepared for legal careers. Additionally, her role on the American Association for Paralegal Education board strengthens connections across the North Region.

With a bachelor's in business management from Emmanuel College and a juris doctorate from Suffolk University Law School, Nowakowski connects her professional background to benefit Bristol students. As a Professor and Paralegal Studies Chair, she leverages industry connections to secure internships and job opportunities.

Advocating for social justice in the classroom, Nowakowski serves on the board of the Bristol County Bar Association and the Justice Bridge Legal Center. She addresses the need for accessible legal advice through initiatives like "Ask a Lawyer," and she hosts the cable television show "Bristol Legal."



Felisa Ojadi-Kedigui Named Newman Civic Fellow



Felisa Ojadi-Kedigui

Felisa Ojadi-Kedigui, an exemplary student leader at Bristol with a passion for community and a commitment to the health and wellness of children, has been honored with the prestigious 2023-2024 Newman Civic Fellowship.

This year-long program, exclusive for Campus Compact member institutions, celebrates students who exhibit leadership on their campuses and demonstrate a

commitment to finding solutions for challenges facing communities locally, nationally and internationally.

Felisa serves as Vice President of the college's Student Senate as well as the Diversity Leader of Bristol's Multicultural Student Center. She works as a Residential Counselor for a youth program in Fall River and as a volunteer with Bristol's Mobile Food Market, in partnership with the Greater Boston Food Bank.

Set to graduate this spring with an Associate in Science in early childhood education, Felisa has ambitious plans to continue her education with the ultimate goal of working with the United Nations.



Jo Ann Bentley Receives Prestigious Award

Bristol’s Associate Vice President of Administration and Facilities Jo Ann Bentley is the recipient of the 2023 Massachusetts Facilities Management Association (MAFMA) Member of the Year Award. The award honors facility staff members who have provided exemplary service to an institution’s building and facility as well as to the Commonwealth.

Jo Ann is an accomplished licensed architect who exhibits exceptional leadership of Bristol’s facilities department, overseeing 1 million square feet across five college locations and managing more than \$100 million in capital projects.

MAFMA is a network of state facilities personnel, established by the Massachusetts Division of Capital Asset Management and Maintenance (DCAMM).

LUSOCENTRO 20 Years of Celebrating Portuguese Language and Culture

LusoCentro at Bristol is committed to exploring the language and heritage of the Portuguese-speaking community and fostering engagement to promote the appreciation and exploration of Portuguese and Lusophone cultures. This year marks a significant milestone – the 20th anniversary of LusoCentro, led by Carlos A. Almeida, Ph.D., a Professor of Portuguese and the coordinator of the Portuguese/English Community Interpreting Certificate.

Over these two decades, LusoCentro has curated the Série Cultural do LusoCentro, a sequence of vibrant Lusophone cultural events developed in collaboration with local Luso-American organizations and other institutions of higher education. These activities, supported by Bristol and the Camões Institute, encompass hosting international exchanges with visiting scholars from Portugal, facilitating book luncheons, arranging conferences and lectures, and commemorating World Portuguese Language Day.

This significant milestone underscores the enduring commitment of LusoCentro to cultural exchange and appreciation, leaving a lasting impact on Bristol and beyond.



Photo source: beamforall.com

Driving on Sunshine: Attleboro Campus Welcomes EV Charging Station

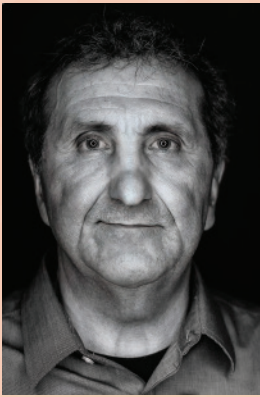
Bristol’s Attleboro Campus is the latest to join the college’s sustainability initiatives. Through a generous donation from the Lockhart Vaughan Foundation and an anonymous donor, the college has added a solar-powered Beam Global EV Charging Station.

The charging station has two ports for charging electric vehicles (EVs) and supports the college’s efforts to implement sustainable green initiatives that help protect our environment and reduce greenhouse emissions.

The station’s “plug-and-play” design requires no grid connection, electrical work and trenching or site construction. It seamlessly fits into a standard parking space, utilizing solar energy to store electricity and provide clean, renewable energy for Bristol’s EV drivers to literally “drive on sunshine.” Drivers can simply plug into the charger without having to download an app, scan a QR code or belong to any EV charging program to “juice-up” their vehicle. As an added feature, the overhead canopy of the EV Charger is heliotropic (Latin for “sun turn”), meaning that it follows the sun and automatically adjusts to the sunlight throughout the course of the day to maximize its solar energy storage.

Because of this equipment acquisition on the Attleboro Campus, Beam Global named Bristol Community College one of its Beam Global Heroes in 2023.

The Wolfson Speaker Series



This upcoming spring, Bristol Community College is proud to introduce the Wolfson Speaker Series, an annual event that will host prominent speakers from across the globe to gather and engage our

community around significant and relevant issues.

The inaugural Wolfson Speaker Series event will feature best-selling author, speaker and freelance photographer, Pete Souza. Souza, who was born in New Bedford and grew up in South Dartmouth, served as Chief Official White House Photographer for President Obama for all eight years and an Official White House Photographer for President Reagan.

He has won numerous photojournalism awards, had solo exhibits at galleries around the country and reached #1 on the New York Times bestseller list. The college awarded Souza an Honorary Degree of Associate in Humane Letters in 2023. The event will take place on Thursday, April 18, 2024, in the Margaret Jackson Arts Center Theatre on the Fall River Campus. Tickets are free.

The Wolfson Speaker Series is in honor of Richard Wolfson, a longtime member of the Bristol Community College Foundation Board of Directors and supporter of the college. Wolfson requested that a speaker series offering the community access to high-profile speakers be created to provide an enriching opportunity at no cost.



COMMUNITY PARTNERSHIPS

FABRIC Arts Festival Takes the Stage



Bristol's partnership with the FABRIC Arts Festival embodied the essence of our community and paid tribute to its vibrant diversity and rich cultural heritage. Organized by Casa dos Açores de Nova Inglaterra (CANI), under the leadership of Michael Benevides of Portugalia Marketplace in Fall River, Portugal-based curator Jesse James and a production team on both continents, FABRIC brought an array of cultural experiences to Fall River, New Bedford and Providence, from October 5 through October 14, 2023.

It culminated at Bristol's Fall River Campus, with "Repose," a public art exhibition by international artist and Somerset native Allyson Vieira, and a concert by internationally acclaimed contemporary fado singer Gisela João. The college's Grimshaw-Gudewicz Art Gallery was also a popular stop on the open studios tour.





Airing Now! 'Bristol Community Cooking'

Bristol's Culinary Arts and Hospitality program launched an exciting new project in Fall 2023 in collaboration with Fall River Community Media (FRCMedia) and Viva Fall River. "Bristol Community Cooking" is a 30-minute show highlighting the South Coast region's restaurants, chefs and owners.

"Bristol Community Cooking" airs on FRCMedia Channel 95 in Fall River on Thursdays at 6:30 p.m. and is available on FRCMedia's YouTube Channel. The first three Fall River restaurants featured on the show are The Path Restaurant & Lounge, Origen Bar & Grill and Europa Pastries & Coffee Shop.

The program features hands-on demonstrations by chefs and owners preparing their restaurant's signature dishes in the college's teaching kitchen, with assistance from Bristol's Culinary Arts students. It also includes interviews focusing on area restaurant owners' entrepreneurial journeys and backgrounds.

"We are delighted for this opportunity to strengthen Bristol Community College's community partnerships with our region's innovative businesses and entrepreneurs, while providing the college's Culinary Arts students with valuable hands-on experience and professional insight," said Vinnie Rege, Dean, Business and Experiential Education.

Bristol's Culinary Arts and Hospitality program is designed to meet the needs of today's competitive foodservice industry. The program provides students with the sought-after knowledge and work ethic that employers value. Students in the program also participate in a term of valuable industry experience through functions, events and an enriching internship.

BristolCC.edu/CommunityCooking 

Bristol Honored as Business of the Year



Bristol was honored with the 2023 APEX Business of the Year Award for a Large Business, presented by the One SouthCoast Chamber at their annual meeting in December. The award honors the hard work, sacrifice and dedication local business owners and professionals bestow upon the region. Bristol's recognition stemmed from its pivotal role as a leader in higher education, invaluable community connections, and an economic driver that fosters an environment of innovation, growth and inclusivity. The One SouthCoast Chamber serves 19 communities in the South Coast of Massachusetts.

Donor Honor Roll

Bristol is extremely fortunate to have such a dedicated and generous community of supporters. Since 2012, more than 3,185 donors have contributed to the Foundation, helping the college continue its work putting life-changing opportunities within reach. On behalf of the faculty, staff and students of Bristol: Thank you!

For gifts given between July 1, 2022, and June 30, 2023

Bristol President's Circle (\$50,000 +)

Educational Foundation of the Massachusetts Society of CPAs
Charlton Charity Fund U/A, Bank of America, N.A., Co-Trustee
Kathy and Brian MacLean Fund
Koppelman Family Foundation
Lockhart Vaughan Foundation
The Rodgers Family Foundation
The Robert F. Stoico / FIRSTFED Charitable Foundation

Bristol Visionary Circle (\$10,000 +)

Delta Dental of Massachusetts
Katherine Dolan '87
Dr. Laura Douglas* and Gregg S. Johnson
Grimshaw-Gudewicz Charitable Foundation
Max F. and Edith C. Gold Charitable Foundation
Mike and Sandy Ryer
Women's Fund SouthCoast Inc.

Bristol Benefactor (\$2,500 +)

BankFive
BayCoast Bank
BayCoast Insurance
Blount Fine Foods
Consulate of Portugal
President Emerita Eileen Farley*
Denise '80 and Carl Feinberg
James Charitable Gift Fund
Jewish Federation of Greater New Bedford
Jeffrey T. Karam
Linda J. Schupack and David H. Good Charitable Fund
Bristol LusoCentro
Massachusetts VFW Foundation Inc.
Mechanics Cooperative Bank
Gilbert I. Mendelson
Hannaford Supermarkets
Mulready Family Fund
My Brother's Keeper
Mary Louise Nunes
Plimoth Investment Advisors
Rhode Island Foundation
Rockland Trust
Tiago Rodrigues
Dr. John J. Sbrega* and Mrs. Jo-Anne M. Sbrega
Schwab Charitable Fund

St. Anne's Credit Union
Maryellen Sullivan Shachoy Hughes
Richard and Susan Wolfson
Robert '68 and Kathleen Wood

Bristol Leader (\$1,000 +)

Ann T. Petrella Trust
Colleen M. Avedikian*
Claudette Bachand*
Barry Family Charitable Fund
Bristol County Savings Charitable Foundation, Inc.
Bristol Holocaust & Genocide Center
Paul C. Burke '75
William and Sandra Campos*
Edward Casey, Esq. and Maria Casey
Pamela A. Colaneri '94*
Andre Costa
Dr.* and Mrs. Jose F. Costa
Larry and Lois Curry
BCC Dental Hygiene Alumni Association
Valentina Videva Dufresne
Mrs. Donna S. Dunn
Fall River Women's Union
Dale Ferris
Granite Lock Co., Inc.

Hadley Insurit Group Insurance Agency

Annie* and Richard Ibara
Virginia S. Leeman*
James H. Mathes '83 and Lisa Strattan
Joan M. Medeiros
Joe Mercadante
Russ* and Beth Milham
Holly and Tom Murray
Lynne M. Massoud Nasiff and Peter J. Nasiff Scholarship Foundation
Karan and Al Ross
Helaine M. Schupack
Frank B. Sousa III
Helene J. Sousa
The Stobart Foundation
Howard Tinberg*
Luke and Debra Travis
Derek Viveiros*
Dr. Robyn Worthington '01*

Bristol Patron (\$500 +)

American Online Giving Foundation, Inc
Bill Berardi*
Joyce* and Peter Brennan
Bristol County Savings Bank
Joanne Carroll-Connor '76*
Michael J. Carvalho

Nick and Margaret Christ
Cliff '74 and Mary Clement
Committee To Elect Christopher M. Markey
James Constantine* and Carol A. Constantine, RN '92*
Paul Coogan '74
E. J. Dionne, Jr. and Mary B. Dionne
Regina C. Pirtle* and Kenneth W. Eaton '73
Maria J. Ferreira-Bedard
Fisher Bus, Inc.
Cynthia G. Flanagan '99
Paul F. Fletcher, Jr.
Bob and Lisa Garand
Christine M. Hammond, PhD*
Robert S. Karam
Steve* and Melissa Kenyon
Loanscale
Renee Maalouf
Diane S. Manson*
Joanne Marshall '71 and Joseph A. Marshall '78
J. Marshall Associates
Mike Tilchin and Linda Greer Giving Fund
Marisa* and Kent* Millard
Manuel F. Neto
Livia Neubert*
Gregory and Nelia O'Donnell

Officer BJ Voss
Memorial
Scholarship Inc.
Philip Oliveira '83
Jo-Ann M. Pelletier
'89*
J. Chrystal Puniello*
Jennifer A. Puniello*
R & M Precision
Machine Co., Inc.
Dr. Robert Rezendes*
and Michele
Atherton '90 '11
Greg* and Kristen
Sethares
Diane L. Silvia, RN '86
Donald J. Smyth and
Joan Pilkington-
Smyth
Kent St. George
Family Charitable
Gift Fund*
Atty. Jane E. Sullivan,
Esq.
The Roberts Family
Charitable Account
Judi G. Urquhart*
Richard C. Walker '72
Webster Bank, N.A.
Patricia H. Weisberger
'91* and Ronald
Weisberger*
Dr. and Mrs. Melvin B.
and Cindy Yoken

**Bristol Supporter
(\$100 +)**

Anonymous (4)
Anonymous*
Joyce Adler
(Fernandes)*
Rahim and Dorothy
Aghai
Maria M. Aguiar
All Star Trust
Carlos Almeida*
Onesimo and Leonor
Almeida
Carol Amaral
Odete Amarelo, Ph.D.*
AmazonSmile
Foundation

Patricia L. Andrade
Shelly V. Armstrong
'87*
Paulina Arruda
Raymond and Beverly
Arruda
Barbara Ashman '80
Maryellen W. Atkins*
Richard H. Aubut '72
Beth Bacchiocchi
Dawn M. Banville*
Frank P. Baptista
William P. Benedetti
Michael J. Bensink*
Jo Ann Bentley '80*
Rebecca Benya-
Soderbom*
Boissoneault Family*
Laura T. Bomback
'87* and Herman R.
Bomback '83
Heidi and Michael
Boswell
Bernice Bowdoin*
Zelma A. Braga
JoAnne Breault '84
'12*
Fr. Jason Brilhante '04
Diane M. Brodeur '77
Emily* and Aaron
Brown
Judith and Gary
Brown
Suzanne Buglione*
Rachel Bunting
Timothy M. Burke
Gabe Cabral
Bill* and Vivian
Camara
Edward L. Canner
Casa dos Acores da
Nova Inglaterra Inc.
Mary Cass*
Faris and Sidney
Cassell
Candy Center
Chad's
Chowderhouse, Inc.
Stacie Charbonneau
Hess*

Cheryl A. Gifford /
Cieplik '81
Gloria J. Clark '06*
Collins Construction
Co., Inc.
Dr. Gary Convertino*
Alfred J. Costa
Liliana Costa '76
Carl J. Cruz '69
Helen M. Dandurand*
Maria Alice De Aguiar
Veronica T. DeBonise
'98
Deborah Roher
Enhancing Tzedakah
Fund
Susan A. DeCoste*
Cathleen DeSimone
Michael P. Dion, PhD
'01
Lucie-Anne Dionne-
Thomas
William do Carmo
Andrew Dolan
Carolyn Dorsky
Dr. John G. Douglas
Maria Manuela P.
Duarte '73
Johanna Duponte-
Williams*
Erik C. Durant*
Ed Majewski
Plumbing & Heating
Alton Ellis
Deborah Ellis
Mark Epstein '68
Mitchell Estaphan*
Frank C. Fagundes
and Maria D.
Fagundes
Cheryl Falcon
Fall River Municipal
Credit Union
Hugh and Maureen
Fanning
William and Joan
(Arruda) Farquhar
Gregory Fater, Esq.
and Kerry Fater
David F. Feeney* and
Cheryl Feeney '75

Allen A. Felisberto '72
Timothy J. Foley '85
and Mary A. Foley
Diane M. Forand '08*
Andrea Fortier*
Dr. Adrienne N. Foster
Scharf*
Scott N. Francis '83*
Sharon Friedman and
Marcia Szymanski
Tara Gagnon
Robin M. Gallant '91*
Renata Garcia*
Christine J. Gibney
Gordon W.
Goodfellow*
Nancy J. Goulart '87
Stefanie M. Gouveia
'10
J. Thomas Grady*
David S. Graves
Dora L. Grossi
Richard Gunther
Sandra A. Haley '79
Colonel Julie Hall
Nicole Hall*
Ginny Handfield
Laura Hogan*
Peter J. Homen*
David and June
Horowitz
Kay Hughes
Elizabeth Isherwood-
Moore
Carol Israel, PhD
Shellise L. Jackson
Jeannine Jenney
Jobs for Progress
Joseph E. Kaeterle
Jerald Katz
Mr. and Mrs. Donald E.
Kilguss, Jr.*
Todd Kobus
Paul Kostek '77
Margaret J. Kugler '97
'05 '07 '09*
Denise M. Lamoureux*
Deborah* and Kevin
Lawton

David J. Ledoux*
Donna Ledoux
Paul Lennon
Cecil E. Leonard*
Eric '75 and Carol '71
LePage
Eileen and Wayne
Levasseur
Drs. Jacques '69 and
Nancy Leveille
Jeanne Linhares '76
Kenneth D. Lipman
Ron Lister*
Kaitlyn E. Litwinetz
El Senor Don
Gregorio*
Amy Marden '95*
Leonard Martin '73
Steven Martins
Jacqueline Mbugua*
Lizabeth A.
McDonald*
John P. McMahon
Maria D. Medeiros
Maxine Mello
Joan M. Menard
Viktor Mendes
Michelle and Robert
Meunier
Carol A. Michael '70
John R. Mitchell
Dr. and Mrs.* Gerald
Monchik
Cathleen L. Moniz '77
Moore & Isherwood
Communications,
Inc.
Michele Murphy*
JP Nadeau*
Kathryn Cornell
Nadeau '69
Mark T. Nataly
Frank Noble '72*
Alec J. Nolan '16
Maryanne Noris, MD
and Mark Hilty, MD
Catherine Norton
Adam T. Nunes '18
Kevin R. Nunes

Donor Honor Roll *continued*

Nurses' Alumnae
Association of Union
Hospital

Dr. and Mrs. Kevin D.
O'Brien

Michael B. O'Donnell
Bristol Office of
Disability Services

Daniel Ohara '76

Kate O'Hara*

Michael O'Leary

George Oliveira

Andrew and
Jacqueline O'Neil

Marsha and John
Onufrak

Holly Pappas*

Keith A. Parker

Paul's Quality
Kitchens, LLC

Karen M. Perry

Joseph and Renee
Pimentel

Francisco Piscani '08

Vin and Mary Plourde

Jorge and Jennifer
Pombo

William Powers '03*

Elaine A. Previte*

John A. Previte*

Stephen R. Ragno*

Robert S. Rak*

Joyce A. Ramsden

Gustavo Raposo

Vinnie Rege*

Fire Chief Stephen J.
Rivard (RET) '74*

Olivia Robinson '15*

Michael and Patricia
Rodrigues

Tereza Rodrigues

Dr. Bruce A. Rose '70
and Cynthia A. Rose
'70

Benita Rose-
Monteiro and Eugene
A. Monteiro

Sharon and Craig
Rosen

Elliot and Patricia
Rosenfield

Roy Consulting Inc.

Henry Roy

James and Cordelia
Russell

Steven A. Rys

Ruth Santos

Anthony R. Sapienza

Tom and Nona
Sbordone

Chase Sheda

Eduarda M. Silva '81

Peter Silva '73 and
Abra Degbor

Arthur C. Silveira and
Barbara A. Charles

Jill Simoes

Susan Smith '85 and
Barry Smith

Natalie '11* and
Edward '05 Sousa

SouthCoast
Community
Foundation

Mary K. Spavento*

Dennis '72 and Jo-
Ann St. Pierre

Thomas F. Stone

Penny A. Sullivan '11

Atty. C. Samuel Sutter

Victor M. B. Tavares*
and Manuela R. C.
Tavares

Richard '78 and
Patricia Taylor

Richard D. Terry '95

The Jacqueline Smyth
Moglia Revocable
Trust

Jennifer Theriault '12
and James Theriault
'97 '06

Doris M. Thornton
Keith T. Toni*

Travers Giving Fund

David and Mary* True

Anthony and Martha
Ucci*

Peggy Verronneau

Mark and Patricia
Verronneau

Dr. Michael J. Vieira*

Atty. Rodney Vieira
'89 and Patricia
Kennedy-Vieira

Jennifer L. Vincent*

Carlton M. Viveiros

Melody Viveiros and
Ashley Cordeiro &
Family

James F. Wallace

Elizabeth A. Waring

David J. Warr*

Betty M. Welch

Reverend M. P. West

Elizabeth D.
Whitehead*

Kelemu L.
Woldegiorgis*

Zachary Wolfson*

Bristol Friend (\$1 +)

Anonymous

Anonymous* (4)

Warren L. Abreu '75

Torrey Adams

Charles A. Adler

Lara B. Akinyemi*

Elizabeth R. Alcock*

Horacio M. Almeida
'72

Suzette M. Almeida

Andrew Amatruda

Debra Anderson*

Jean Andrew '86

Brenda Araujo-
Barbour

Robert C. Archer

Chad Argotsinger*

Lee Arietta

Jesse Armell, III

Janelle C. Arruda '81*

Pamela Arruda

Dayle Augustine '71

Michael Aupperle

Joshua A. Awosan*

Angelo Barbosa

Patricia L. Barbosa

Fadi A. Bark

Ronnette A. Barros
'05*

Judith Barrowclough

Jacqueline Barry*

Rosario A. Basay*
and Alejandro
Latinez*

Ameur Belmedani*

Paula Benedetti

Shirley Bennett

Kenneth Benoit

Nicholas and Phyllis
Berdos

Charlotte Berman

Robert C. Bianchi
'77 '79

Brian N. Blanchette

Maryann Bonifacio

Victor Bonneville

Dario Borim

John P. Botelho '89

Zoe Bradley

Lisa Brennan

Joan L. Burke

James J. Camacho '79

Franklin Capron '89

Ernest '78 & Mary
Carreiro, Jr.

Arlene S. Carter

Susan and Stephen
Carvalho

Renita Fernandes
Casey '92

Bert Caton '72

Donna D. Chace '00

Robert Chamberland

Nicole Channing

Committee To Elect
Alan Silvia

Committee To Elect
Paul Schmid

Consulate of Cabo
Verde

Cordeiro Family Trust

Vasco Cordeiro, Jr.*

Elaine Costello

Edward and Carol
Cote

Diane M. Cote '87

Jeffrey D. Craig '95*

Victoria Crapo

James T. Crofton '78

Lorna Currier

Kevin C. Curry '73

Maria Jose Sousa
D'Alu '69 '86

Jenna L. DeBortoli*

Jillian DeCosta*

Robert Delaleu*

Vinny deMacedo

Matthew A. DeMatos

Robert '81 and Elaine
'84 DeMoranville

Marianne Beaulieu
DeSouza '75

Kayla N. Desrosiers
'13*

Nancy-Lee Devane*

Lydia Rocha DiBella '68	Nancy L. Gilman*	Manouka Leconte
Joseph T. DiMaria*	Jamie Goldberg	Mark Levin
Denise DiMarzio*	Anne C. Gomes	Timothy T. Lifrak '69*
Kate Donly	Kathleen Gonsalves '74	Ms. Vanusa Lima
Lucile P. Drane	Katherine Goonan	Patrick and Laura Long
Susan F. Ducharme '16	Debbie Gran-Palumbo*	Cori R. Lopes '07*
William S. Duffy*	Mary E. Gregg '84	Michael Lovice*
Elizabeth Dye	Robert L. Gregory '83	Luxury Condominiums
Deborah Dziedzic '98*	Daniel A. Griffin '17	Sandra Lygren*
Sheila A. Elias	Kathleen M. Griffith	April Lynch*
Thomas W. Enderby	Farah Habib*	Eleanor and Lou Maier
Kellie* and Albert Fassbender	William Hall III '72	Robert Mangiaratti
Madeleine E. Ferraz*	Dalila Hallett	Thomas Mangiaratti
Barry Ferreira	Diane Hamel*	Alaina R. Marcotte*
Maria O. Ferreira '84	Janice Hanson	Dalia Marinilli
Paul Ferreira '69	Heather Harrison*	Helen Marques '09*
Silvino C. Ferreira*	Bradley Hayes '92	Dr. Carla Martin
Carol (Ann) Ferry '85	Kelli Hiller*	Sandra and Rick Mayhew
Jacqlyn A. Fletcher '15	Sara Hincapie	Patricia McGovern '82
Mary K. Flynn*	Andrew Hinote '11*	Daniel and Paula McKeever
Nancy Flynn	Thomas* and Carolyn Hoye	John McKenzie '73
Kathleen Foley-Peres*	Joannie '82 and Bill Hoyle	Stephen McKinney
Brittany Forand*	Robert P. Huff '71	Christine McMichael*
Moffarah Forsythe	Glenn Ippolito	Gail McMorrow-Donahue '72
Stephen L. Foster, Jr. '78	Peter Jarvis	Mary McMurtery
Deborah Fournier	Maggie C. Judge*	Angelina Medeiros*
Deborah Freitas '88	Judith L. and Robert L. Sterns Fund	Grace Medeiros
Elizabeth French*	Nancy A. Kandarian '98	Louise Medeiros '70
Cara Fuchs	Raphael Kanter	Robert C. Medeiros
Tracy A. Furtado-Chagas*	Deborah R. Kaplan	Cathleen C. Mello '06*
Paula E. Gagnon	Christine Kelleher	David and Priscilla Mello
Howard '96 and Sheila Galitsky	Arlene M. Kelly	Patricia Milton
Lisa M. Gallant-Stanzione '85 and Timothy M. Stanzione	William Kelly* and Michelle Kelly '74	Kathleen Minihane
Robert Gaouette '94	Sarah G. Kocur '08 '09*	William J. Molloy
Kevin J.* and Kathleen Torpey Garganta, RDH '73*	Muriel T. Kokoszka '68	George J. Moniz*
Linda Gautie '01*	Susan M. Ross-Kut '75	Jennie C. Moniz '05*
Michael S. Geary*	Meg Lambert	Ron K. Moniz '79
Robert Geddes*	Alejandro Latinez*	Theresa (Lynch) Moniz '70
	Kim Lawrence	Lynn A. Motta '92
	Jonathan Leaf '09	David Mulligan*
		Jean E. Myles*

Scholarships

Foundation scholarships help students achieve their educational goals through financial need and merit-based scholarships made possible by our generous donors. Your investment makes a tremendous impact.

For a full listing of Bristol Community College's 180 scholarships and their descriptions, visit:

 BristolCC.edu/Scholarships



Ways to Give

Your gift to the Bristol Community College Foundation makes a tremendous difference. It only takes a moment to help build a brighter future. Funding can be directed to general support, scholarships, projects or academic areas of the college.

Gifts to the Annual Fund (also known as the Bristol Fund) are the cornerstone of the Foundation's fundraising efforts and provide resources that can be immediately applied to meet the college's greatest needs.

Gifts to the Endowment demonstrate a special commitment to a particular program or project. With a minimum gift of \$15,000, one can create a specially named endowment fund, earnings that can be used to provide annual funding for a student scholarship, a special program or an academic area of the college.

Honorary/Memorial Gifts pay tribute to a valued family member, friend, classmate or faculty member. Please indicate who the gift honors or memorializes at the time of donation.

Other Ways to Give: Additional opportunities include:

- Stock donations
- Payroll deduction for employees
- Online, anytime, at BristolCC.edu/Donate

Donor Honor Roll *continued*

Stephen and Elizabeth Neto	Joanne M. Rebello '97 '01	Jennifer L. Simoes '13*	Maureen Sullivan	Robert S. Vitello*
Network for Good	Anne Marie Reed '88 '04*	Jane Simonin '02 '03	James L. Sullivan	Linda M. Viveiros*
Kayla Nguyen	Kristine M. Resendes '93*	Leo N. Sirois*	Pierrette and Edward Sullivan	Margaret Fortin Vollmer '69
Sherrie L. Niedziocha '10 '11 '12	Lucie L. Resendes '92*	Rebecca A. Smith	Patricia Svendsen	Elizabeth A. Voss
John Nieman	Melissa Riley	Maria J. Soares '89	Linda Taveira '98	Gretchen Weis
Mari Nosal '83	Paula Rioux	Mary L. Soderlund	Denise Tennant	Vance E. Westgate
Elzbieta Nowakowski*	Karen Robbins	Melissa Solmonese	The Benevity Community Impact Fund	Marvin Wharton '73
Ann R. O'Leary	Rosemary Robbins '81 and Steven R. Robbins	Jennifer J. Sousa '12*	Keith J. Thibault* and Catherine Sanky-Thibault	Mary H. Whelan
Vivien Ojadi*	David Rocha, Jr.	Michael R. Sousa '99	Tifereth Israel Congregation	Laurel Whisler*
Eric Oldford '13*	Kimberlyn Roche	Robert and Anne (RDH '79) Souza	Betty J. Tigano, RN '89	Elizabeth H. Whitfield
Anne Oldmixon	Paula Harrison Rodgers '71	Carol Souza	Arlene Todd	Jack Wilcox*
Maria Pacheco*	Joyce B. Rodrigues	Joseph C. Spencer*	Town of Fairhaven	Mark Zajac*
Elliot "Eric" Packer	Linda Andrade Rodrigues '98	Ryan Stankiewicz	Scott F. Travers	Shelly Zimbardo
Fred Padua '01	Joseph Roposo	Russell Stanley '85	Law Office of Luke P. Travis	
Karen A. Parker '11*	Ricardo Rosa	State Street Foundation, Inc.	Jennifer Trudeau	
Lisa Parsons*	Daniela Rubinstein	John W. Stathis '85	Andrea J. Twombly	
Karen Peirce	Katie L. Ruggieri*	Evelyn Staudinger	Erin R. Twomey-Wilson	
Christine and John Peragallo	Avis W. Rupert*	Stop & Shop Community Bag Program		
Gabriel M. Pereira '68*	Rosemary and John Salamon	Ronald L. Struminski		
Donna Perry	Carmen Santa	Sandra Stuart		
Gilbert Perry	Everilis Santana*			
Harriet Picard	Wendy A. Santos			
Jan Pietraszek '86	Linda Savastano			
Mr.* and Mrs. Gerald Pietruska	Shannon Savoy '15*			
Sara L. Pike*	Elizabeth Schneider '93			
Wendy Pimentel '05*	Maria F. Sharples, RDH '87			
Mary Lou Pires '80 and Stephen Pires	Betsy Shea-Taylor			
Lucinda Poudrier-Aaronson*	Patricia R. Sherblom*			
Dr. Alan W. Powers*	Lt. Col. Ernest Silva, Jr., USAF (RET) and Mary Jo Murphy			
Mary Anne Quick*	Diane R. Silveria*			
Ana M. Ramos '01*	Richard Silva			
Barbara Raposa '92				
Paula Raposa '77				
Phillip Rapoza				
Courtney Raymond				
Tahais I. Real-Martins '98 '00*				

If your name is listed incorrectly or has been omitted, please accept our sincere apologies and notify the Foundation with any changes.

* Current or former Bristol employee



Giving Thanks

Each year, our Graphic Design II students, under the direction of Marisa Millard, Chair of the Visual & Performing Arts Department, design Bristol's Giving Thanks Card. The students present a creative selection of inspirational designs for consideration to the President. This year's winner is Hector Tomassini. Hector designed a digital painting featuring a dandelion. Through this project, the college also selected Kaylee Affonso's design for the cover of this annual report.

In Memory

Maria dos Anjos
Barreira Aguiar
Joseph and Joan
Andrade
Professor Eugene
Archese
H. M. Booth
Chef John Caressimo
Dr. John Carvalho,
DDS and Irene
Carvalho
Milton Clement
Christopher M.
Cordeiro
Dr. Lester W. Cory
Shelly Ann Costa '22
Officer Raymond
Curry
Joseph B. D'Adamo
Lucienne J. Dionne
Dr. Priscilla D.
Douglas
John H. Drane
Paul P. Dunn M.D.
Leo Elias
Elizabeth Milham
Danielle L. Feinberg
'13
Stephan C. Flanagan
Nancy Carvalho Frazee
Sally S. Gabb
Professor Ara A.
Gelenian
Dr. David and Marion
Greer
Nicholas T. Grossi
Peggy Harrington
Dr. Rachel V. Holland
Jack P. Hudnall

Ruth E. Hurley, RN,
MSN
Rosalie and Ernest
Israel
Angela G. Jean '72
Alan J. Lizotte, Ph.D.
Dr. Amine B. Maalouf
Dr. Gerald G. Magnan
Jessica Rosa Mayhew
'09
Beverly A. Mullen
Loree Moglia Mullen,
RDH '88
Jacqueline S. Moglia
Linda D. Mulready
Mr. and Mrs. J. George
Munro
Lynne M. (Massoud)
Nasiff
Dr. James W. Pelletier
Salvatore Piazza
Reverend Jose A. F.
Dos Santos
Paul N. Robillard
Lucy Rose
Elizabeth "Betty"
Roussel
Margaret A.
Ryckebusch
Angela Rose
Sbardella
Stephen W. Schupack
Jennifer E. Serpa
Sally Sweeney
Michael W.
Verronneau
Max Volterra
Officer BJ Voss
Joseph A. Yasaian

In Honor

Professor Robert
Caron
Professor James M.
Corven
George Crook
Officer Nancy Davis
Madeleine Ferraz
Lonnie Friedman
Professor Larry
Frolich
Kevin J. Garganta
Touly and Mark
Harrington
Dennis Haworth
Professor Paulette M.
Howarth
Deborah Jones
Lynne Lapalme
Paul Lauenstein
Dennis Maniatis
Professor Diana
(Donnie) McGee '82
Prof. Joseph Murphy
Patricia A. Ollila
Sheila Pereira
Helaine M. Schupack
Frank B. Sousa, Jr.
Beverly Thorn
Alan Ventetuolo
Philip H. Viall
Nikita L. Viera
Patricia H. Weisberger
'91
Dr. Ron Weisberger
Diane West
Professor Diana Yohe
Dr. and Mrs. Melvin B.
and Cindy Yoken

About the Foundation

The Bristol Community College Foundation is a 501c3 nonprofit organization that was formed in 1980 with the express purpose of raising funds to support the important work of Bristol Community College in meeting the lifelong educational needs of the growing and changing community it serves. Funds raised by the Foundation provide student scholarships; books and supplies; emergency funds for students in need; funding for academic programs and equipment; funding for student support services; and restricted funds for special college needs.

The Foundation and the college work in partnership to pursue funding from foundations, corporations, community organizations and individuals, not only for immediate support but also to build a long-term endowment that benefits the college and our students well into the future.

The overall governance of the Foundation is managed by a volunteer Board of Directors, many of whom lend their business expertise to the Foundation's strategic direction. Members on the board are from a wide variety of backgrounds, from towns and cities throughout southeastern Massachusetts and Rhode Island.

Bristol Community College Foundation
777 Elsbree Street, Fall River, MA 02720
BristolCC.edu/Foundation
BCCFoundation@BristolCC.edu
774.357.2007

Financial Report

Bristol Community College Foundation, Inc.

Statement of Financial Position

As of June 30, 2023

ASSETS:

Current Assets	\$4,796,587
Property and Equipment, net	\$17,123,581
Contributions receivable, net of current portion	\$0
Investments	\$13,793,681
Right of Use Assets	\$5,741,319
Other Assets	\$18,000

Total Assets \$41,473,168

LIABILITIES AND NET ASSETS:

Current Liabilities	\$5,162,051
Due to College (NOWI)	\$12,749,428
Lease Liability	\$5,083,325
Mortgage notes payable, net of current portion	\$404,709

Total Liabilities \$23,399,513

NET ASSETS:

Unrestricted	\$4,138,694
Temporarily Restricted	\$13,934,961

Total Net Assets \$18,073,655

**Total Liabilities
and Net Assets** \$41,473,168

Statement of Revenue & Expenses

As of June 30, 2023

REVENUE AND SUPPORT:

Contributions	\$1,669,988
Special Events	\$57,056
Investment Return	\$79,412
Rent and Other Income	\$1,575,278

Total Revenue and Support \$3,381,734

EXPENSES:

Scholarships, Awards and Student Support	\$2,763,245
General and Administrative	\$104,215
Fundraising	\$133,879

Total Expenses \$3,001,339

Changes in Net Assets \$380,395

FY23

Since 2012, the
Bristol Community
College foundation
has contributed

**\$15.8
million**

In total support to the college

In FY23

\$1.16 million

was given to the college

20

Faculty and staff
grants awarded
totaling

\$51,579

251

Student scholarships
awarded

90%

of every dollar raised goes directly
to Bristol Community College and
Bristol students

Total scholarship funds awarded

\$309,000

Leadership

President

Laura L. Douglas, Ph.D.
President, Bristol Community College

Bristol Community College Board of Trustees

Frank P. Baptista

Renee Clark

Valentina Videva Dufresne
Secretary

Joseph C. Ferreira

Pamela Gauvin, Esq.

Jeffrey T. Karam
Vice Chair

James H. Mathes '83
Alumni Trustee

Todd E. McGhee

Joan M. Medeiros
Chair

John Morris
Student Trustee

Lynn A. Motta '92

President's Leadership Team

Joyce Faria Brennan
Vice President, Marketing
& Communications

Emmanuel R. Echevarria
Chief Human Resources
Officer

Andrew Fisher, Ed.D.
Vice President,
Academic Affairs

Steve Kenyon
Vice President,
Administration & Finance

April Lynch
Chief of Staff and Strategy
Development

Jennifer Menard
Vice President, Economic
& Business Development

Kate O'Hara
Vice President, Student
Services and Enrollment
Management

Jo-Ann Pelletier '89
Chief Information &
Data Officer, Information
Technology Services

Judith G. Urquhart
Chief Development Officer

Bristol Community College Foundation Board of Directors

Nicholas M. Christ
Vice President of Board
Development

Laura L. Douglas, Ph.D.
Ex Officio, Bristol
Community College
President

Cynthia G. Flanagan '99
Ex Officio, Alumni
Association Chair

Brian Hodess

Liz Isherwood

William Kiley
Assistant Treasurer

Kathy MacLean
Vice President of
Fundraising

John McMahon
Clerk

Joan M. Medeiros
Ex Officio, Board of
Trustees Chair

Patrick J. Murray, Jr.

Thomas P. Murray, CPA

Gregory F. O'Donnell

Benita Rose-Monteiro

Elliot Rosenfield, CPA
Treasurer

Diane L. Silvia RN '86

Donald J. Smyth

Frank B. Sousa III
President

Clayton Timas

Luke P. Travis, Esq.

Donald M. Troppoli

Richard B. Wolfson

Alumni Steering Committee

Justin Alexander '11

Dennis Bibeau '69

JoAnne Breault '84 '12

Christopher Carreiro, Esq. '10

Maurice Cyr '10 '11 '13 '14

Cynthia G. Flanagan '99
Chair

Kathleen Torpey Garganta RDH '73

Joseph Lopes '99

James H. Mathes '83
Ex Officio, Alumni Trustee

Steven Martins
First Vice Chair

Carol Michael '70

Donna Oliveira '86
Secretary

Pam Oliveira '00

Philip Oliveira '83
Second Vice Chair

Monique Onuoha '18

Paula Raposa '77

Stephen Rivard '74

Diane L. Silvia RN '86

Edward Sousa '05

Natalie Sousa '11

Richard Taylor '78

Clayton Timas



About Us

Since its establishment in 1965, Bristol Community College has been dedicated to advancing a vibrant, diverse community through education, learner by learner. Serving as a place for individuals from varied backgrounds, Bristol is a top choice for earning a degree, acquiring work-related training, and broadening cultural and intellectual horizons.

Bristol offers an extensive array of career and transfer programs, leading to associate degrees in science, arts, and applied sciences, along with certificates of accomplishment or achievement. Conveniently located in Attleboro, Fall River, New Bedford, Taunton, and online, our campuses provide students with the flexibility to transfer seamlessly to baccalaureate institutions.

As a leading resource for education and workforce development in southeastern Massachusetts, Bristol is committed to providing programs that not only enhance individual opportunities but also contribute to the economic health of the region.

Bristol's Business Solutions & Partnerships division offers tailored training for businesses and the community, including the National Offshore Wind Institute (NOWI). The NOWI is a state-of-the-art training facility that provides globally recognized training and certifications for the emerging offshore wind industry.

At Bristol, the focus is on prioritizing learners' needs by offering comprehensive support services and career advancement opportunities. By reducing barriers to educational access, the college aims to pave the way for student success.

Building active partnerships with businesses, industries, K-12 schools, colleges, universities, and social service agencies is a key aspect of Bristol's commitment to maintaining the relevance and effectiveness of both credit and noncredit programming.

In essence, Bristol Community College provides an accessible, innovative and inclusive education that prepares students to navigate and succeed in our ever-changing world.

BristolCC.edu     

Bristol Community College is an Equal Opportunity and Affirmative Action Employer. We value diversity and equity and are committed to creating an all-inclusive community free from discrimination and harassment. Bristol believes that diversity, equity and inclusion among our community members is imperative to the success of our mission to serve our students well and is the mainstay of our values.

Bristol Community College is accredited by the Commission on Institutions of Higher Education of the New England Commission on Higher Education, Inc. (NECHE)

