



PARENTING ADVANCEMENT PATHWAYS Monthly Newsletter

◆ A Brief Intro:



Bristol's Parenting Advancement Pathways program supports student parents by providing case management, financial and career planning, and integrated academic support to help them balance education and parenting. Participants access on- and off-campus resources, including community mentoring, academic planning, assistance with SNAP/EBT, housing programs, utility aid, etc. The program prioritizes BIPOC, low-income, and single-parent students but is open to all enrolled parenting students through a simple application and brief intake process.



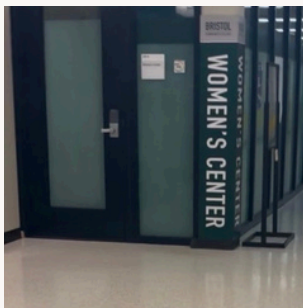
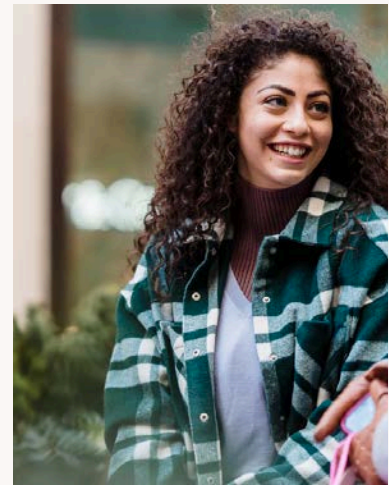
In this newsletter you will find:

Latest projects, community events, free resources, **scholarship opportunities**, and more. Keep Reading!



Our Services:

- Parenting Workshops and Support
 - Guidance on managing child tantrums and challenging behaviors.
 - Tips for fostering positive parent-child relationships.
- Financial Literacy Workshops
 - BayCoast Bank: Credit, Mortgage, Budgeting, taxes, Retirement, and more!
- Support with applications for essential programs such as:
 - SNAP/EBT for food assistance.
 - State-aided public housing and Section 8 vouchers.
 - Housing assistance and utility bill payment programs.
- Referrals to local community resources tailored to meet family needs.
- One-on-One Consultations: personalized case management support to address specific parenting challenges or family needs.
- Community Mentoring via [Pave Your Path](#)
- Monthly Support Circles: An empowering, safe, and inclusive space for parenting students to build and foster community by sharing experiences and stories



Visit us in the Women's Center!

WE ARE IN E104. COME BY AND SAY HI.

The Women's Center offers student-centered programs, workshops, lectures, and seminars aimed at improving self-esteem, developing leadership skills, promoting diversity, and raising awareness about women's and gender issues. Students can also access free hygiene products and clothing in the center.

BRISTOL COMMUNITY COLLEGE | 777 ELSBREE STREET, FALL RIVER, MA 02720



IG @bristolwomencenter | WomensCenter@BristolCC.edu

PARENTING ADVANCEMENT PATHWAYS

REFRESHMENTS,
SOCIALIZING, AND
MANY VALUABLE
RESOURCES
AVAILABLE TO ALL
STUDENTS!

**FEB. 13
3-5 PM**

*Bristol's
Fall River
Campus*

*E Building RM 104E
777 Elsbree Street
Fall River, MA*

The Women's Center

The Women's Center would like to welcome students back and is here to support you in your journey at Bristol! More than ever, it is important to engage in conversations and experiences regarding anti-racist, intersectional feminism, which can create a more equitable and resilient college community and world.

Student Support Services:

- Community Connect - an initiative to connect with our community partners and their works relevant to our students
- Emotional/Crisis support
- Film and Book series
- Ongoing programs focused on retention & social development
- Parenting Advancement Pathways
- Safe space
- Speakers and discussion panels on topics that relate to women
- Support and referrals to community organizations for survivors of sexual and intimate partner violence
- Women's Circle



Helen Quinn Pasin SHE/HER

SR. SPECIAL PROGRAMS COORDINATOR
FOR WOMEN, GENDER & SEXUALITY

Helen, a sexuality educator and violence prevention advocate, holds a Master's in Journalism from Northwestern. She has led consent workshops, collaborated with policymakers, and facilitated support groups for survivors of sexual and domestic violence.

Helen.QuinnPasin@BristolCC.edu
774.357.2954 | Women's Center 104E

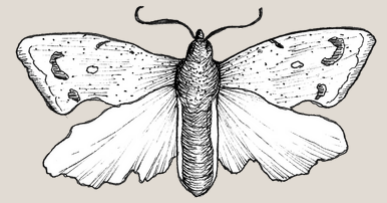
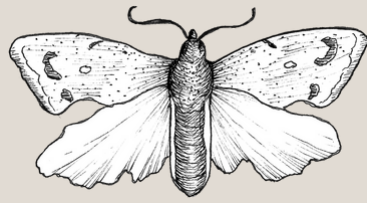
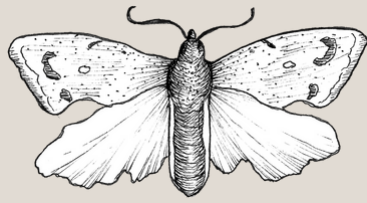


Vanessa Smith SHE/THEY

SPECIAL PROGRAMS COORDINATOR
FOR PARENTING ADVANCEMENT
PATHWAYS

Vanessa Smith is a Licensed Clinical Social Worker (RI) with a Master's in Social Work from Howard University. She specializes in providing evidence-based interventions, supporting underserved populations, and addressing systemic challenges through client-centered care. She is also a Fall River native!

Vanessa.Smith@BristolCC.edu
774.357.2987 | Women's Center 104E

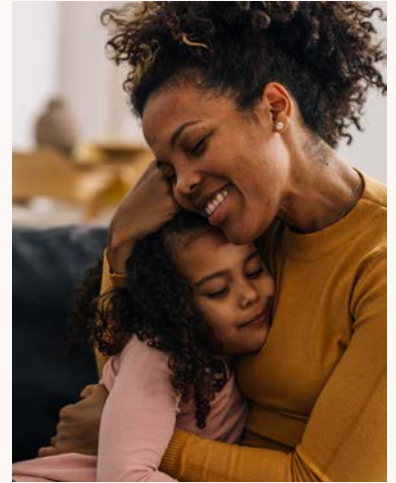


Community Events

UNITED NEIGHBORS OF FALL RIVER -
COMMUNITY HAPPENINGS

Spanish-speaking Grandparents/Kinship Caregivers Support Group:

- **Monday, January 6th - 6:30p - 8:00p** *via Zoom*
- A new virtual support group for Spanish-speaking grandparents/kinship caregivers will be created to meet others and learn about services and resources. Will meet on the first and third Monday of the month.
- To register for the group, email colleen.pritoni@mass.gov and type "Spanish Group" into the subject line.



Parent/Professional Advocacy League January Workshops:

- The Parent/Professional Advocacy League, Inc. (PPAL) workshops are meant for parents, caregivers, family members, individuals, family partners, and/or peer leaders with experience supporting children with emotional, behavioral, or mental health needs.

Monday, January 6th

Guardianship is Not the Only Option: Supporting Decisions in Adulthood

Wednesday, January 8

Pre-Planning for a Mental Health Crisis: The Road to Readiness

Wednesday, January 15

Moving To Young Adult Life: Transition Planning And Post-Secondary Options

Thursday, January 16

Juvenile Justice Basics: Juvenile Justice 101

Thursday, January 23

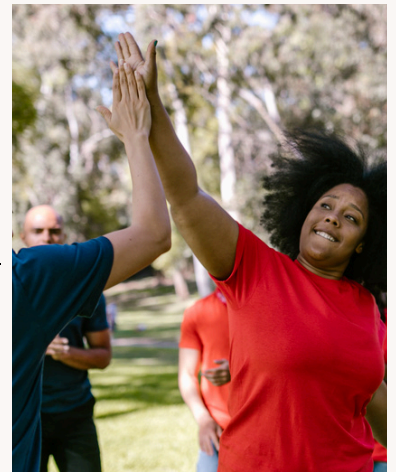
What to Know, What to Expect: Juvenile Justice 102

Monday, January 27

Employment Basics for Parents of Young Adults

Wednesday, January 29

When Your Heart Hurts... Exploring Grief in Mental Health

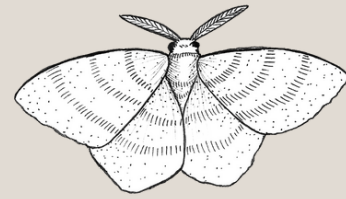


Partners



IG @bristolwomenscenter | WomensCenter@BristolCC.edu

PARENTING ADVANCEMENT PATHWAYS



Child & Youth Resources

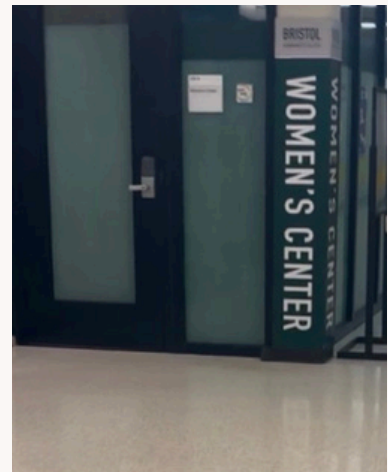
BRISTOL COMUNITY COLLEGE - EARLY HEAD START

- Citizens for Citizens Head Start & Early Head Start’s (CFC) offers early childhood education and care services for infants, toddlers, and preschoolers.
- Open for children ages 2.9 years to 5 years old
- Bristol students, staff, and faculty
 - Full-Time Care – Pace Child Care Voucher and Associated Parent Fee
 - Part-Time Care – (6 hours per day) Free
- For further information, please contact the main office at 427 Robeson Street, Fall River, MA 02720, [508.679.0041](tel:508.679.0041).



BALANCED LEARNING CENTER - ELEMENTARY-AGED YOUTH GROUPS

- Groups will run for 8 weeks, January 21 to March 20; [register here](#).
- Groups include: Lego group, Master Builders Club, Creative Arts group, Confidence club, Brave Buddies, and Brave Explorers.
- For questions or help registering, email group.programsbclc@gmail.com



Scholarships

SOUTHCOAST COMMUNITY FOUNDATION SCHOLARSHIP APPLICATION NOW OPEN!

- There are over 100 scholarships to award in 2025! [Start your online application now](#)
- No FAFSA or other financial documents are required!

- Applications must be complete by January 21, 2025, at 11:59 pm.
- Questions? Call or email Adrianna Heard at 508-996-8253 ext. 214 or ahheard@southcoastcf.org
- You can also sign up for the [SCCF Scholarship Application Drop-In Q&A Session](#) on Tuesday, January 14, 5:00p-6:30p.



IG @bristolwomenscenter | WomensCenter@BristolCC.edu
PARENTING ADVANCEMENT PATHWAYS



APPLY HERE!



(APPLICATIONS OPEN 1/13/25)

Our Network

EMPOWERING FAMILIES, ENRICHING LIVES, BUILDING STABILITY

The Parenting Advancement Program will work with the college's student centers and departments – such as the Women's Center, Multicultural Affairs, Disability Services, Admissions, Advising, Financial Aid, Career Services, and Student and Family Engagement, to customize services and resources to aid student success.

These efforts aim to address unique challenges faced by student-parents by providing academic support, career guidance, financial assistance, and family-friendly campus initiatives, all designed to empower them to balance their educational pursuits with parenting responsibilities effectively.



Stay Connected

SHARE YOUR UPDATES WITH US!

Do you have a program or event you'd like to feature in our next newsletter? We'd love to hear from you! Contact Vanessa Smith at Vanessa.Smith@BristolCC.edu to share your updates and ensure your initiative gets highlighted in the next volume. Let's keep building connections and supporting our community!

