

Since its chartering in 1965, Bristol Community College has been advancing a vibrant, diverse community through education, learner by learner. Bristol is where people from diverse backgrounds turn to earn a degree, access work-related training and expand their cultural and intellectual horizons.

Bristol offers a rich variety of career and transfer programs that lead to an associate degree in science, arts and applied sciences, as well as certificates of accomplishment or achievement. Students are able to transfer to many baccalaureate institutions throughout the state and country from any of our convenient locations in Attleboro, Fall River, New Bedford, Taunton and online.

As the leading resource for education and workforce development in southeastern Massachusetts, Bristol provides programs that promote individual opportunity and the region's economic health. Bristol's Business Solutions & Partnerships provides customized training for businesses and the community. The college also strives to put the needs of learners first with support services and career advancement opportunities that lead to student success by reducing barriers to educational access.

Bristol also develops active partnerships with business and industry, preK-12, colleges and universities, and social service agencies to maintain relevance and effectiveness of all credit and noncredit programming. Bristol provides an accessible, innovative and inclusive education that prepares students to navigate and succeed in our ever-changing world.



Bristol Community College is accredited by the Commission on Institutions of Higher Education of the New England Commission on Higher Education, Inc.

Bristol Community College is an Affirmative Action/Equal Employment Opportunity Employer and does not discriminate on the basis of race, sex, gender identity, color, national origin, sexual orientation, genetic information, religion, age, veteran status or disability under state or federal law in any aspect of employment, admissions, access or treatment of its programs and activities.

Bristol \$5,282 ANNUAL TUITION & FEES

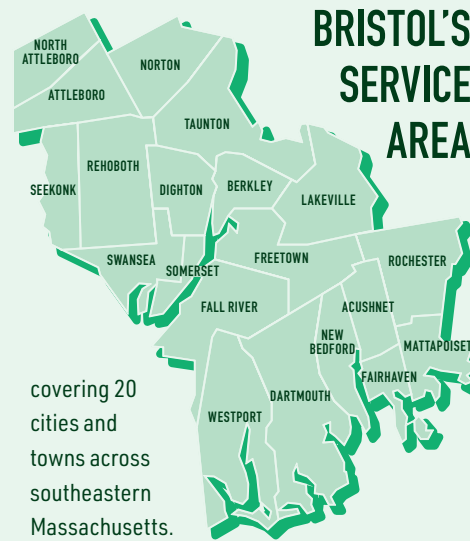
Bridgewater \$10,732

UMass Dartmouth \$14,408

2021-22 tuition & fees compared to local 4-year institutions. (Based on academic year full-time enrollment or 24 credits)



75+
TRANSFER AGREEMENTS

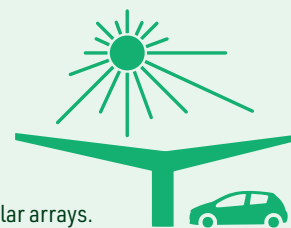


9 NJCAA PROGRAMS

Basketball (M/W), cross country (M/W), golf (M), outdoor track & field (W), soccer (M/W) and e-sports.

3.1 MILLION kWh

Electricity generated annually by our rooftop and parking canopy solar arrays.



22

ELECTRIC VEHICLE CHARGING SPACES

138 DEGREE & CERTIFICATE PROGRAMS

Programs cover a broad range of academic and career-focused subjects, from art and design to veterinary health care.

ESTABLISHED IN **1965**

VISION

Advancing a vibrant, diverse community through education, learner by learner.

4 LOCATIONS + ONLINE

Attleboro, Fall River, New Bedford, Taunton and anywhere with WiFi.



MISSION

Bristol Community College provides an accessible, innovative and inclusive education that prepares students to navigate and succeed in our ever-changing world.

18:1 STUDENT TO FACULTY RATIO



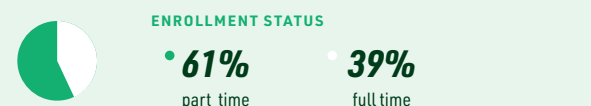
FACT SHEET 2021

BRISTOL COMMUNITY COLLEGE

ENROLLMENT

FALL 2021 SNAPSHOT

5,977 Students enrolled in Fall 2021 at Bristol, which translated to a full-time equivalent (FTE) headcount of **3,699.9**

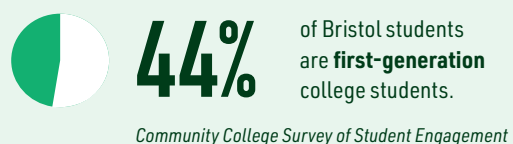


FY21 SNAPSHOT



#4 Ranking by enrollment among the 15 Massachusetts community colleges.

44 Number of area high schools represented by Bristol's dual-enrolled students for Fall 2021.



STATEMENT ON EQUITY

Bristol Community College strives to promote equity by removing social and structural barriers through social justice advocacy, support services, and inclusive, affirming, and accessible education and employment. We respect all cultural backgrounds, social identities, and learning abilities and promote the positive self-efficacy of each college community member. Bristol provides opportunities for dialogue, engagement, and growth by creating a welcoming and respectful environment to work and learn. Additionally, we provide a framework for promoting access and equity for all by challenging and empowering each member of our community to become an agent of transformative change by denouncing racism, hate, violence, and all forms of discrimination.

PROMOTING EQUITY

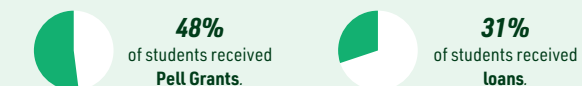
Bristol Community College offers several academic and student centers that actively contribute to the college's efforts to build a more inclusive and diverse environment.

Bristol continues to serve our community by offering the Mobile Food Market in a modified drive-thru format. The market is made possible due to our partnership with the Greater Boston Food Bank and our market volunteers.



participants – including many students – received over **161k lbs.** of free groceries from Bristol's Mobile Food Market in FY21.

FISCAL YEAR 2021 | DEGREE-SEEKING STUDENTS



55% of new incoming students graduate without debt.*

** Federal, state and private loans that were borrowed by the student while enrolled at Bristol.*



SUCCESS INDICATORS

1,340 degrees and certificates awarded in FY21.

93% of our 2021 graduates are likely to recommend Bristol to others.

73% of our 2021 graduates are continuing their education.

73% of our 2021 graduates are employed full or part time or are self-employed.

55% Fall 2019 to Fall 2020 retention rate for first-time full-time students, which exceeds the Mass. community college average of **54%**.

45% Fall 2019 to Fall 2020 retention for part-time students, which exceeds the Mass. community college average of **41%**.

858 Total students who transferred in 2020.

497 students transferred to a Massachusetts public university.

376 of those students graduated from Bristol prior to transferring.

Top transfer institutions: 4-year, public

- 1 University of Massachusetts Dartmouth (233)
- 2 Bridgewater State University (209)
- 3 University of Massachusetts Amherst (25)

Top transfer institutions: 4-year, private

- 1 Southern New Hampshire University (30)
- 2 Laboure College (29)
- 3 New England Institute of Technology (18)

ECONOMIC CONTRIBUTIONS

3,694 learners participated in Economic & Business Development courses in FY21.

Under Economic & Business Development, students engaged with Adult Education programs (e.g., HiSET, GED and ESOL), transition-to-college bridge programs and Business Solutions & Partnerships, which offers customized training and professional development courses.

\$11.6M in total funding to **35** grants through the Office of Grant Development.

These grants were awarded from private, state and federal sources and were submitted by departments across the college, including Academic Affairs, Student Services & Enrollment Management and Economic & Business Development. It does not include the federal CARES Act fund.



STUDENT ENGAGEMENT

The Community College Survey of Student Engagement (CCSSE) provides Bristol with useful insights into the college's student population. In Spring 2021, 787 (15%) students completed the survey. We learned that many of our students are highly engaged with communicating with their instructors, completing course assignments and preparing for class. Students also reported that Bristol is providing the financial support they need to afford their education. Students are not as engaged when it comes to working with other students on projects during class or outside of class. This survey also collected valuable information about the frequency, satisfaction and importance of various college services. CCSSE has also provided the following key indicators of Bristol's overall success:

- 94% of our current students would recommend Bristol.
- 89% report positive educational experiences.
- 78% agree Bristol provides resources to successfully navigate colleges.